

Henry 2DW1 LWD RM 200MD

ARC8A-AA id13_0c_02

Format: VISION Resistivity 2MHz 1:500

Vertical Scale: 1:200

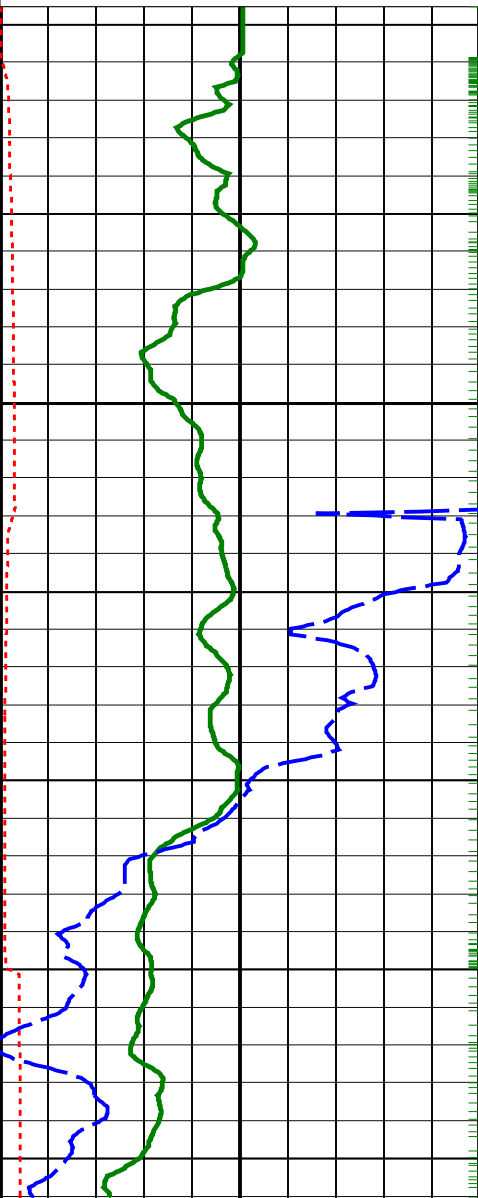
Graphics File Created: 19-Sep-2008 14:28

PIP SUMMARY

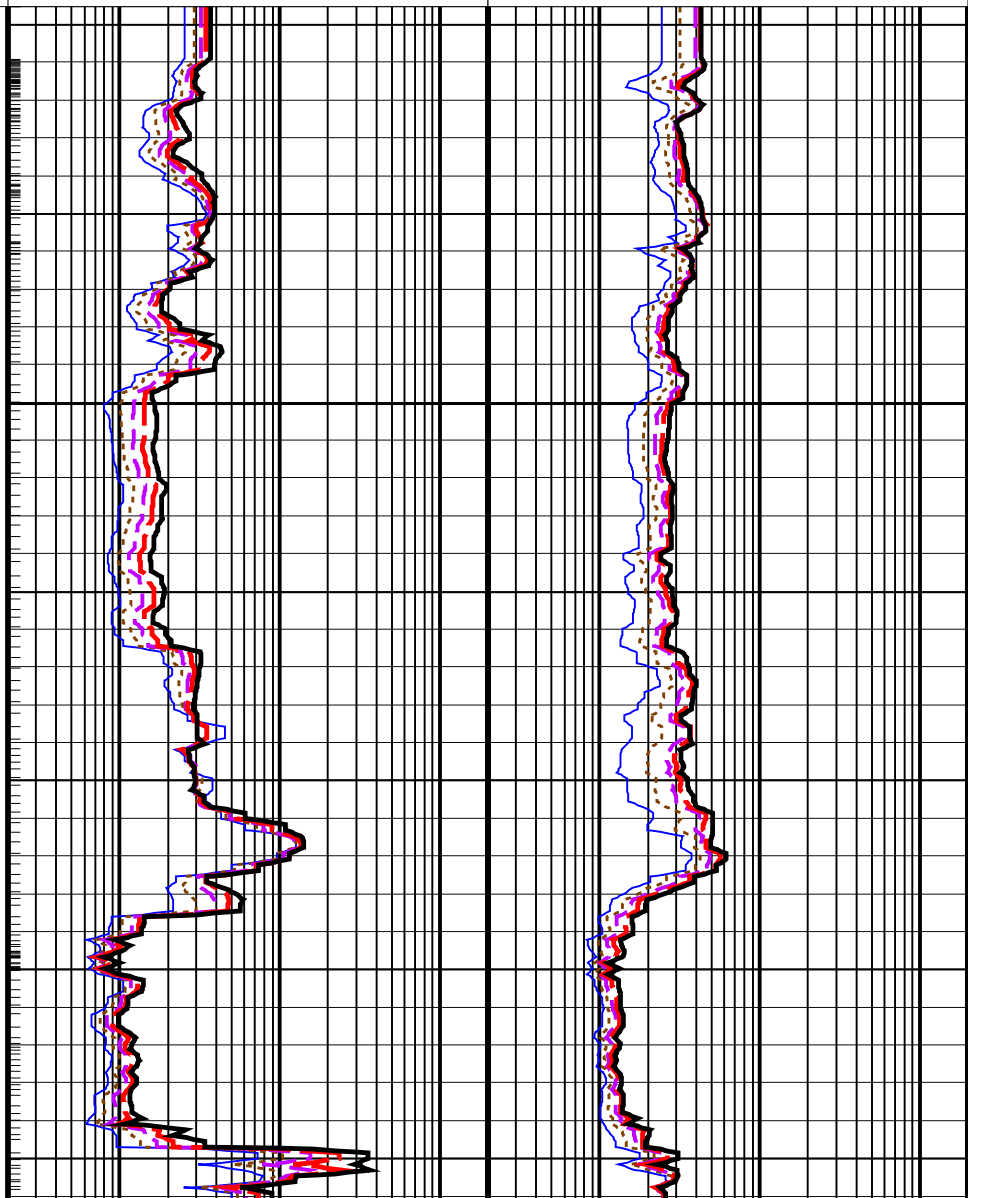
- ├ ARC Gamma Ray Samples
- └ ARC Resistivity Samples

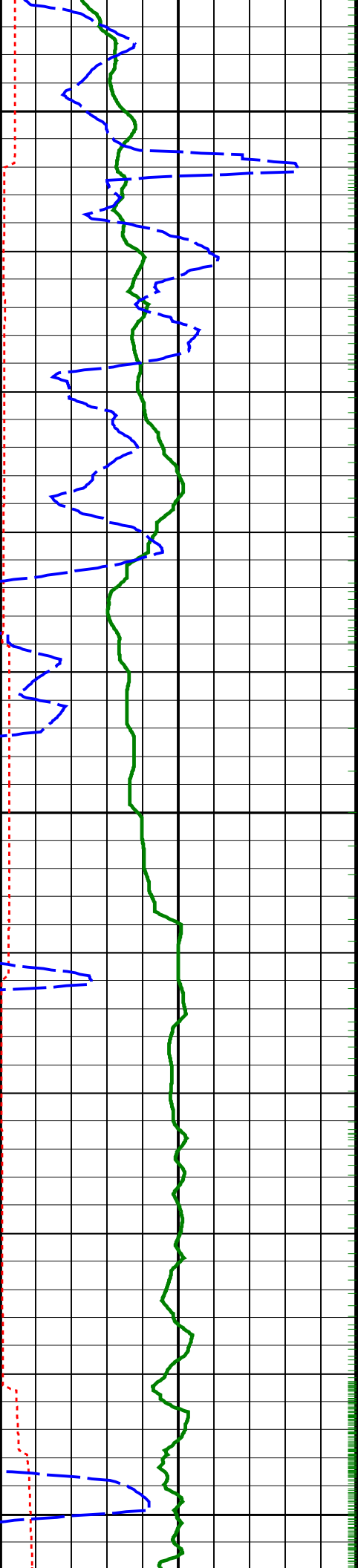
Rate of Penetration, Averaged over Last 5ft (ROP5_RM)	
200 (M/HR)	0
ARC Resistivity Time After Bit (TAB_ARC_RES)	
0 (HR)	10
ARC Gamma Ray (GR_ARC)	
0 (GAPI)	200

ARC Phase-Shift Resistivity 40-in. at 2 MHz (P40H)		ARC Attenuation Resistivity 40-in. at 2 MHz (A40H)	
0.2 (OHMM)	200	0.2 (OHMM)	200
ARC Phase-Shift Resistivity 34-in. at 2 MHz (P34H)		ARC Attenuation Resistivity 34-in. at 2 MHz (A34H)	
0.2 (OHMM)	200	0.2 (OHMM)	200
ARC Phase-Shift Resistivity 28-in. at 2 MHz (P28H)		ARC Attenuation Resistivity 28-in. at 2 MHz (A28H)	
0.2 (OHMM)	200	0.2 (OHMM)	200
ARC Phase-Shift Resistivity 22-in. at 2 MHz (P22H)		ARC Attenuation Resistivity 22-in. at 2 MHz (A22H)	
0.2 (OHMM)	200	0.2 (OHMM)	200
ARC Phase-Shift Resistivity 16-in. at 2 MHz (P16H)		ARC Attenuation Resistivity 16-in. at 2 MHz (A16H)	
0.2 (OHMM)	200	0.2 (OHMM)	200



1625

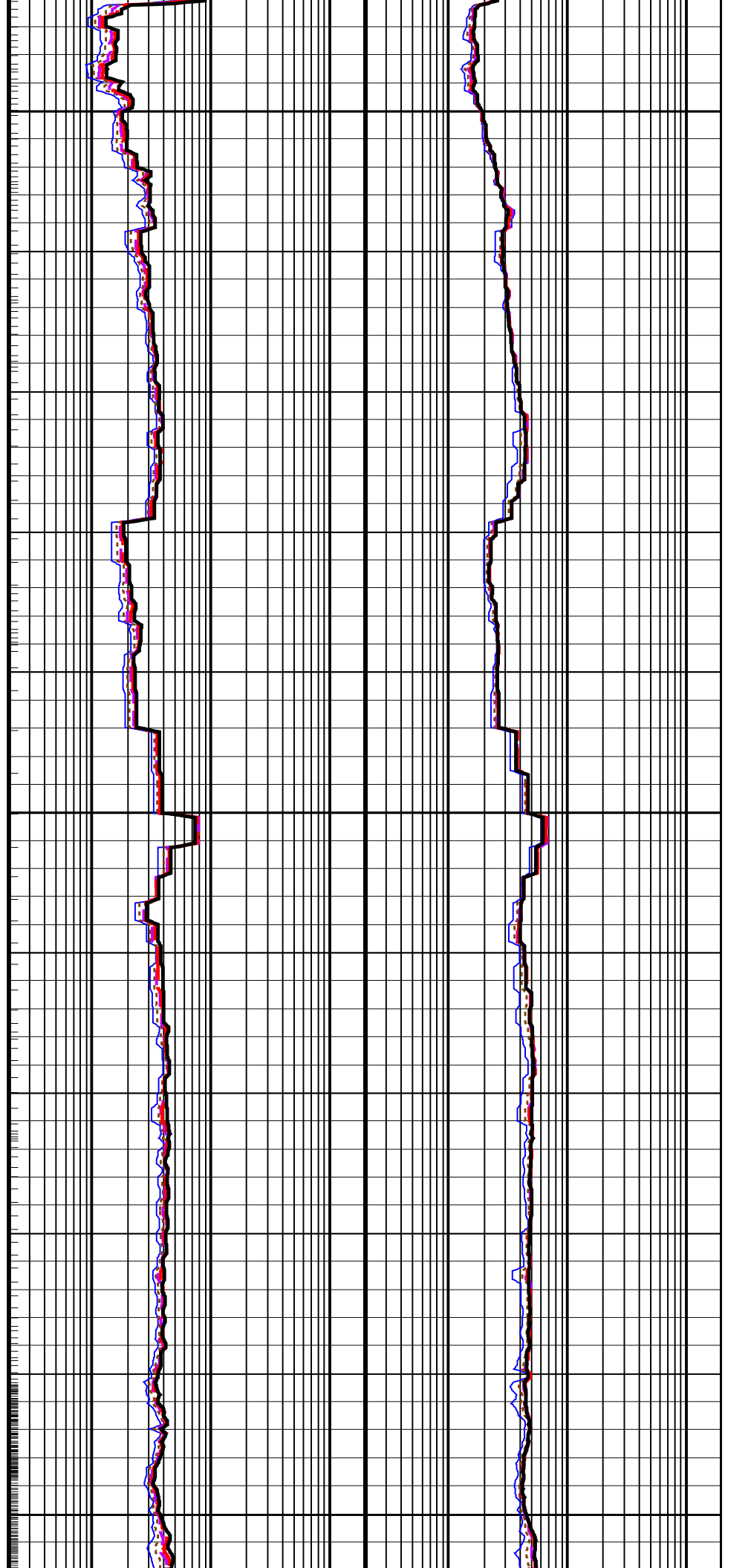


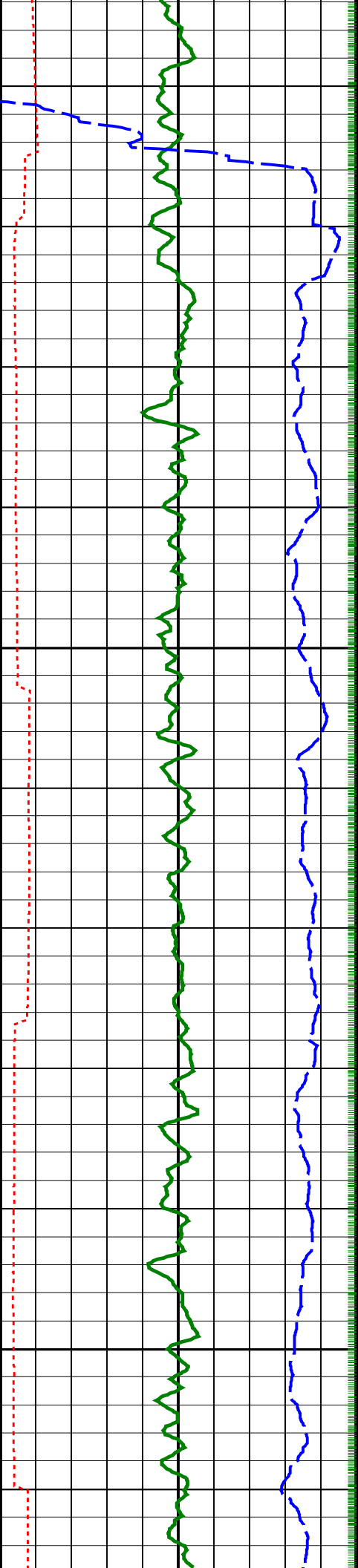


1650

1675

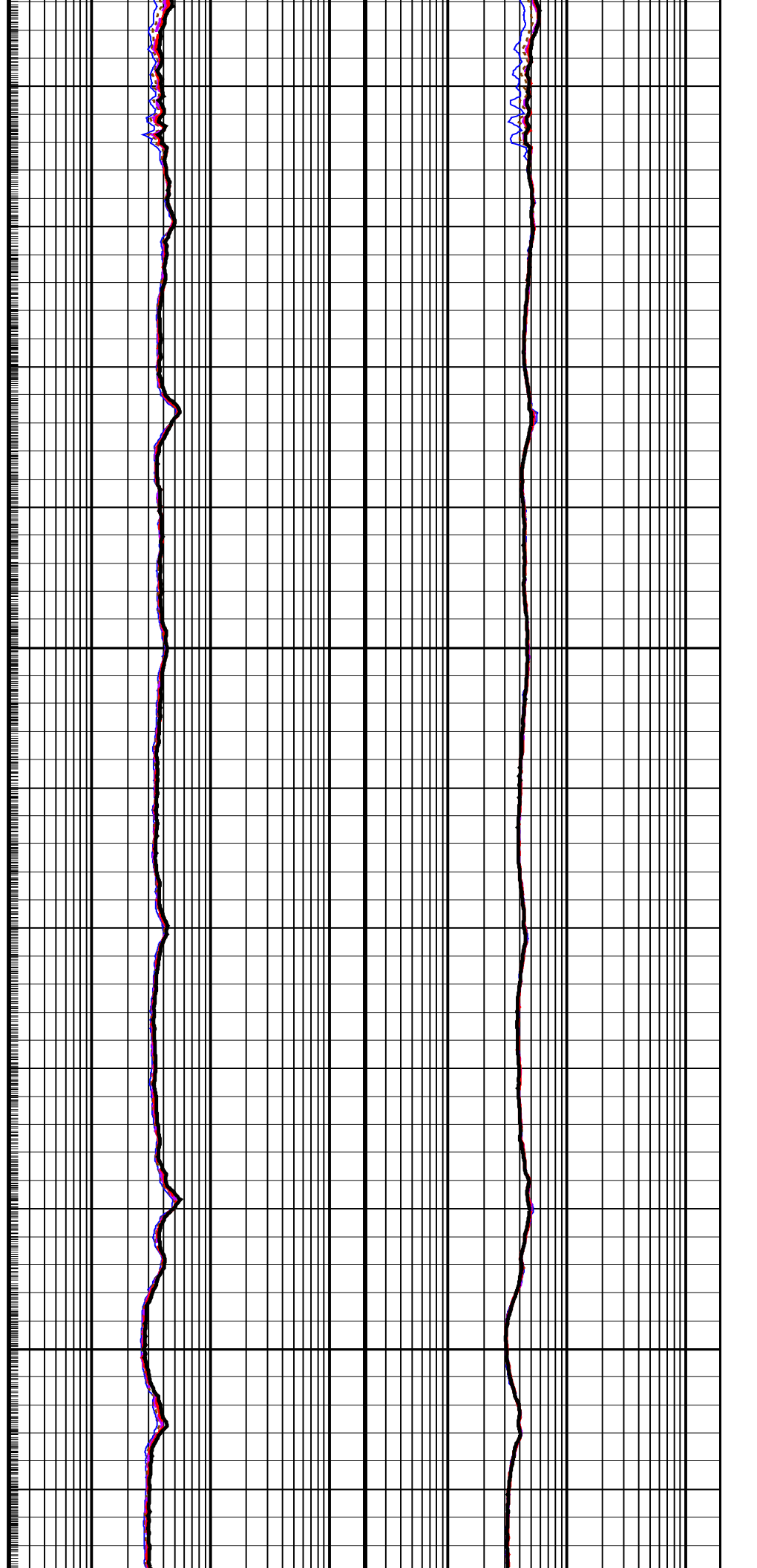
1700

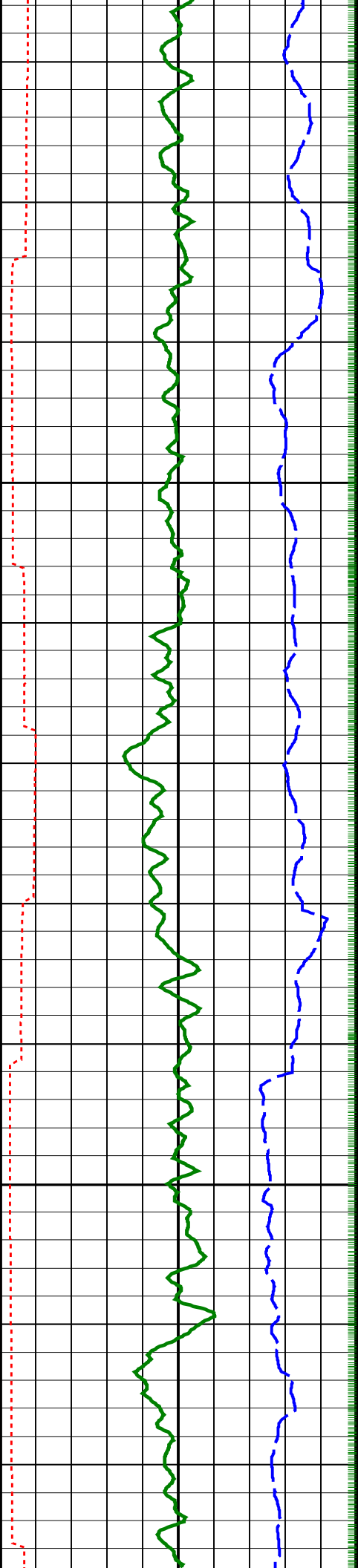




1725

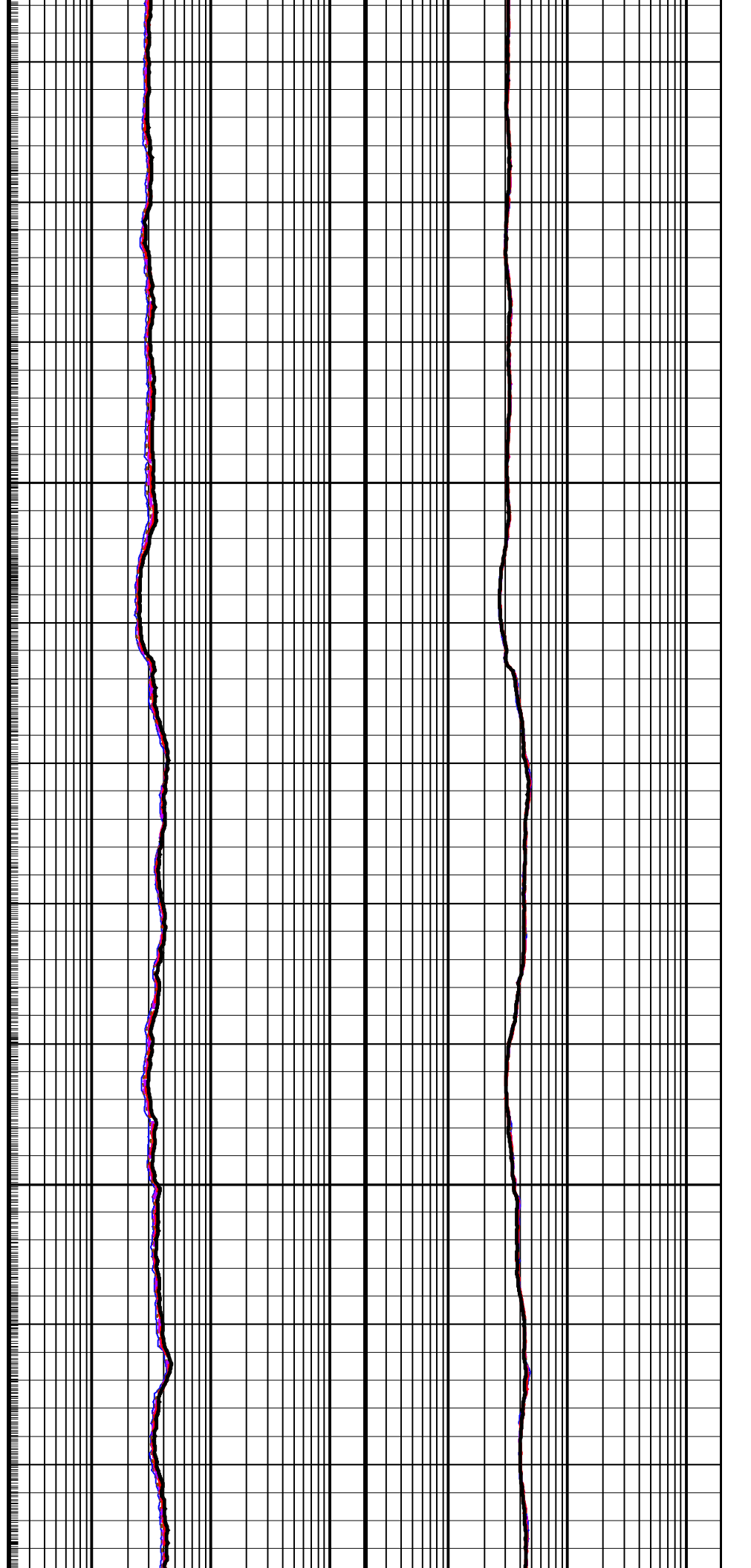
1750

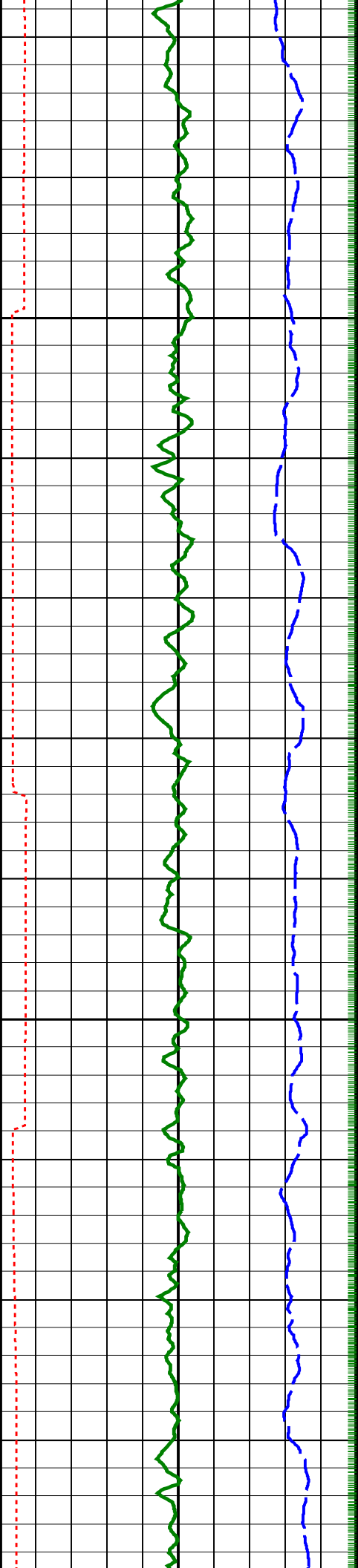




1775

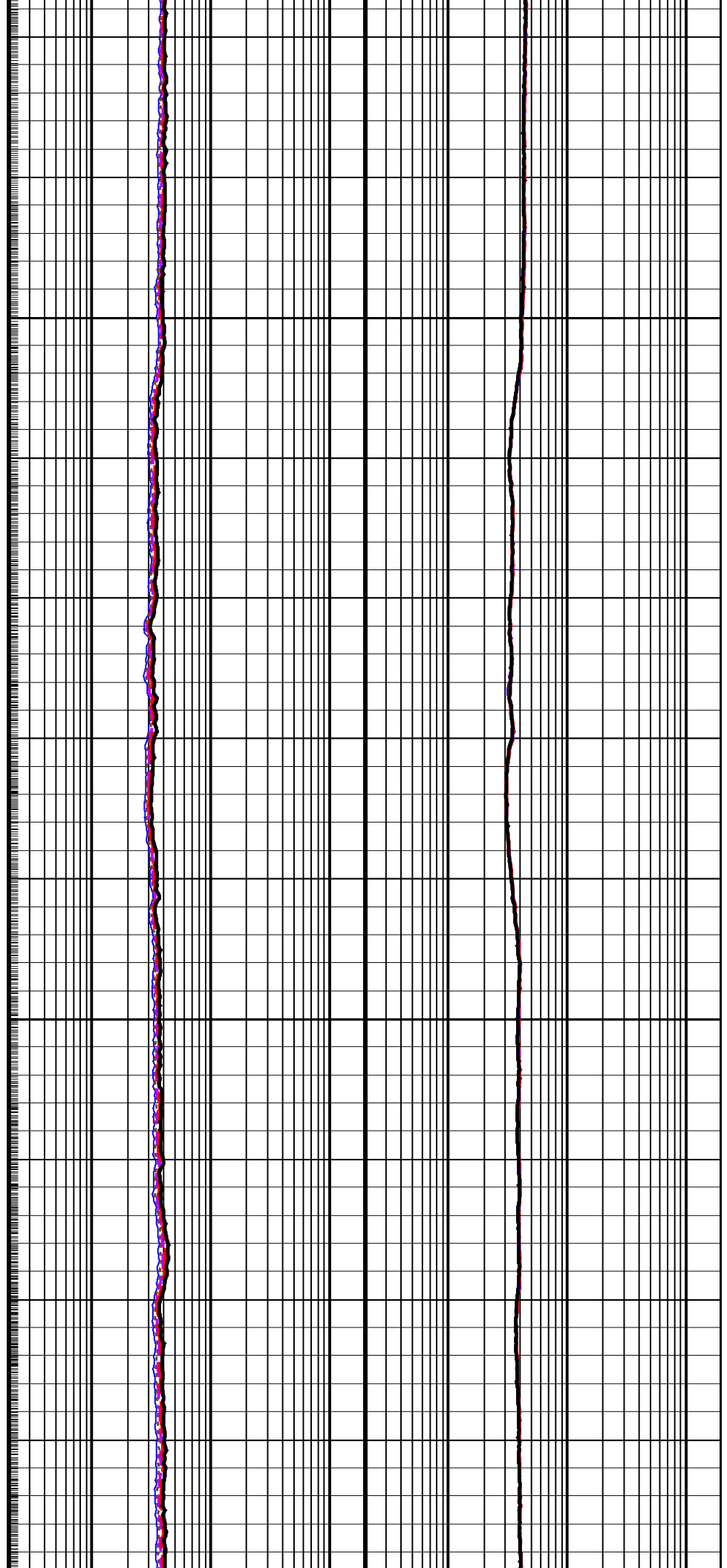
1800

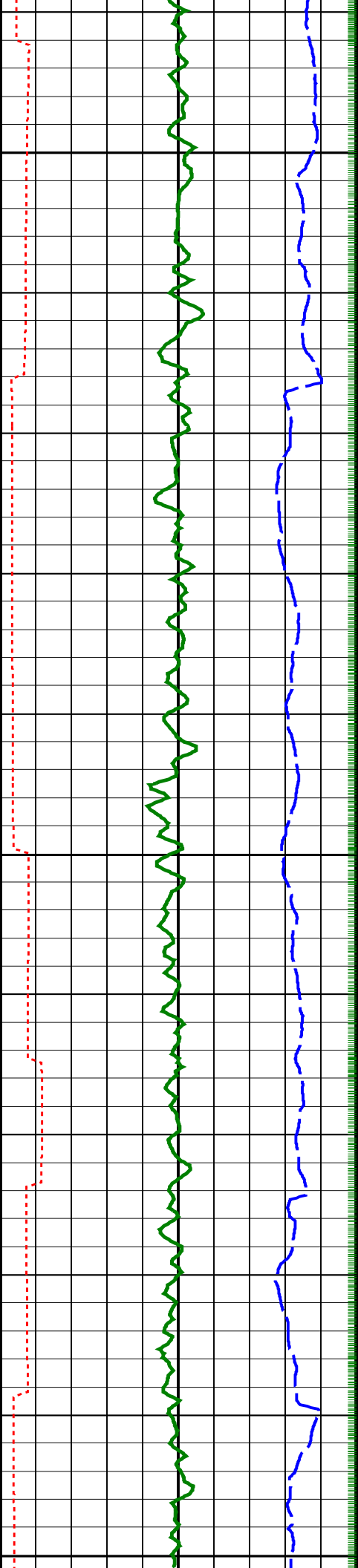




1825

1850

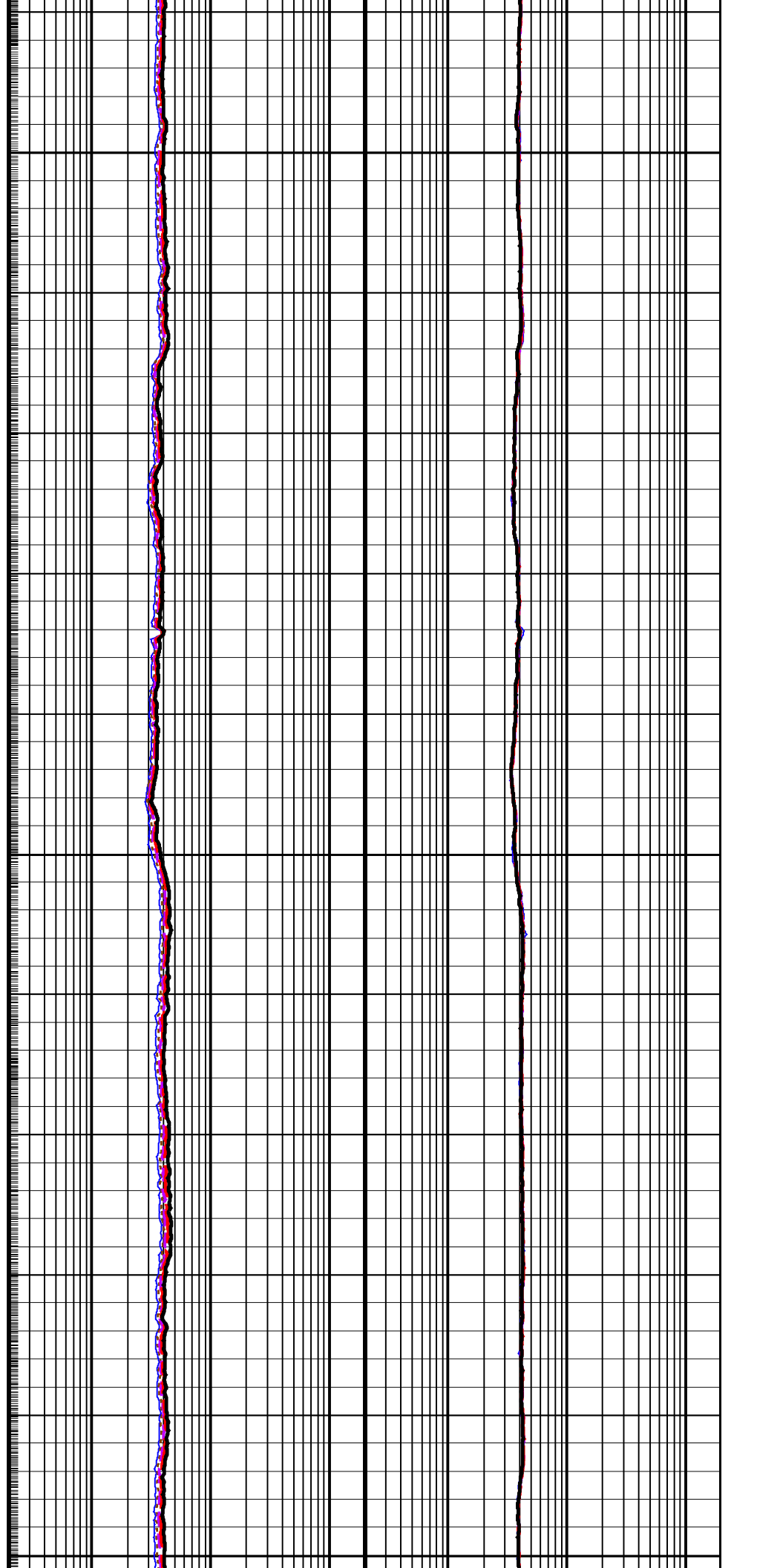


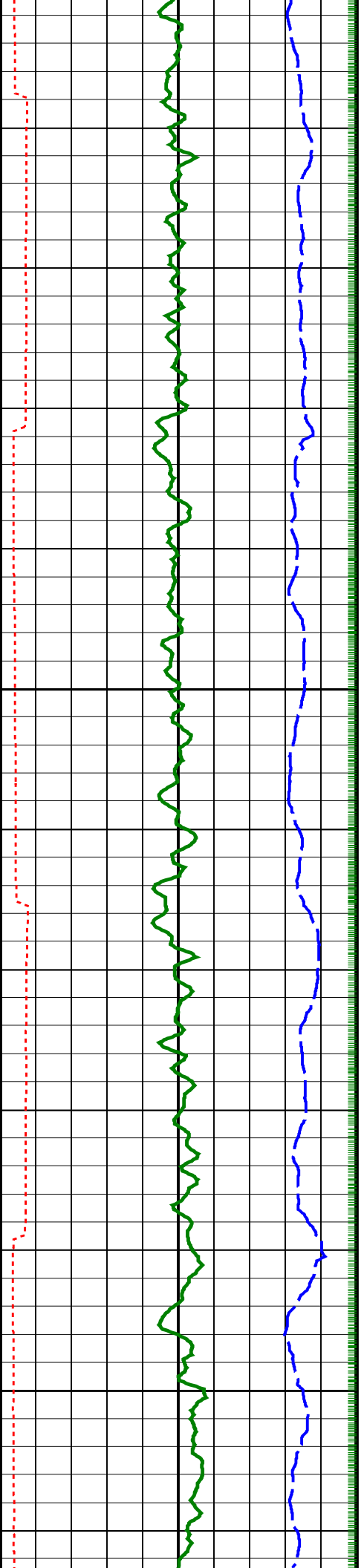


1875

1900

1925

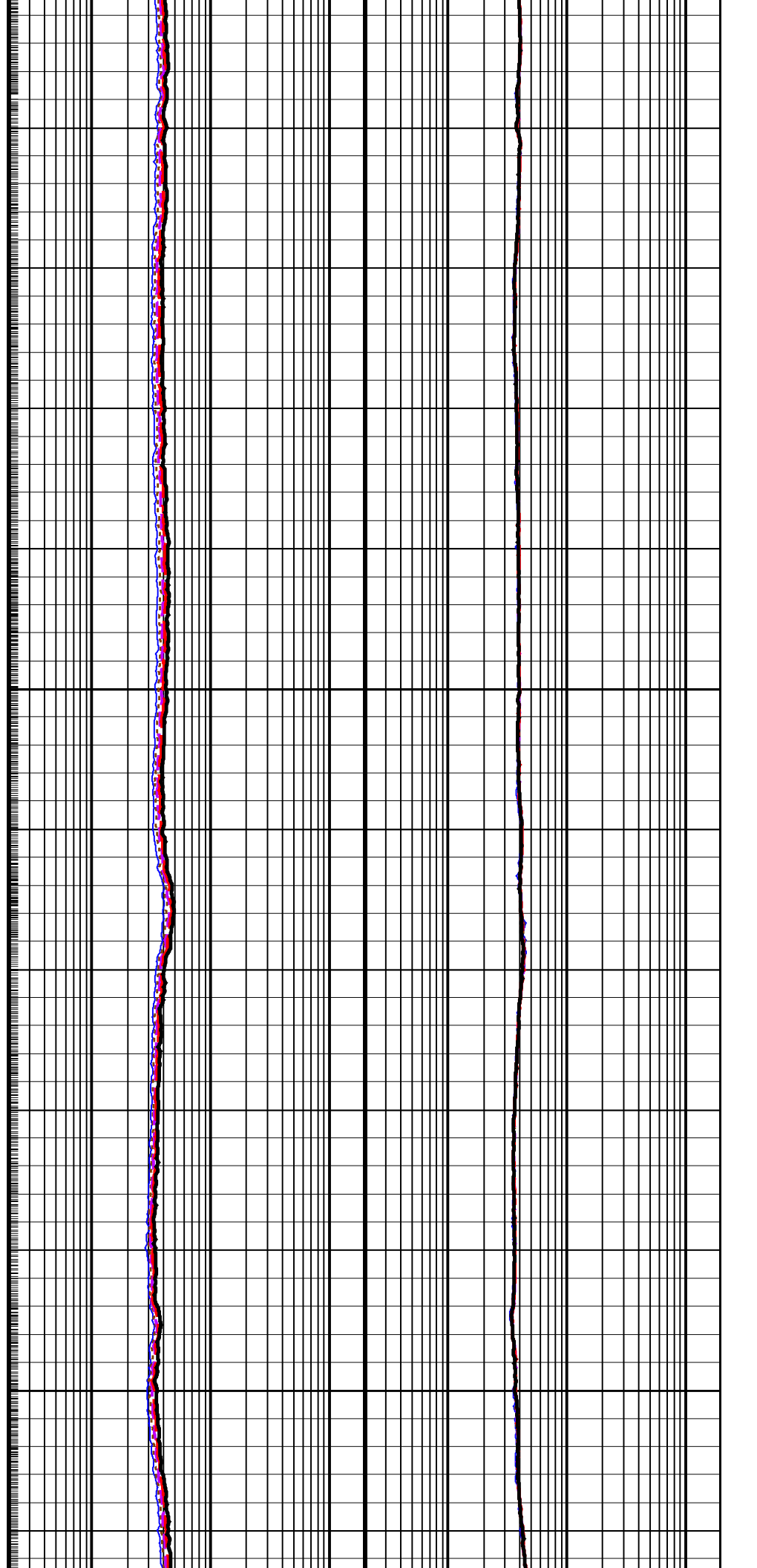


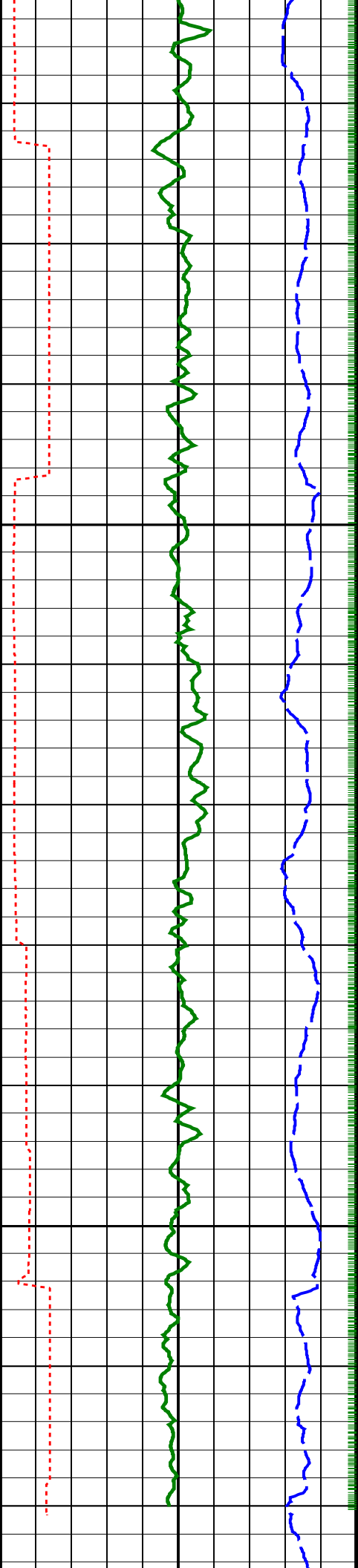


1925

1950

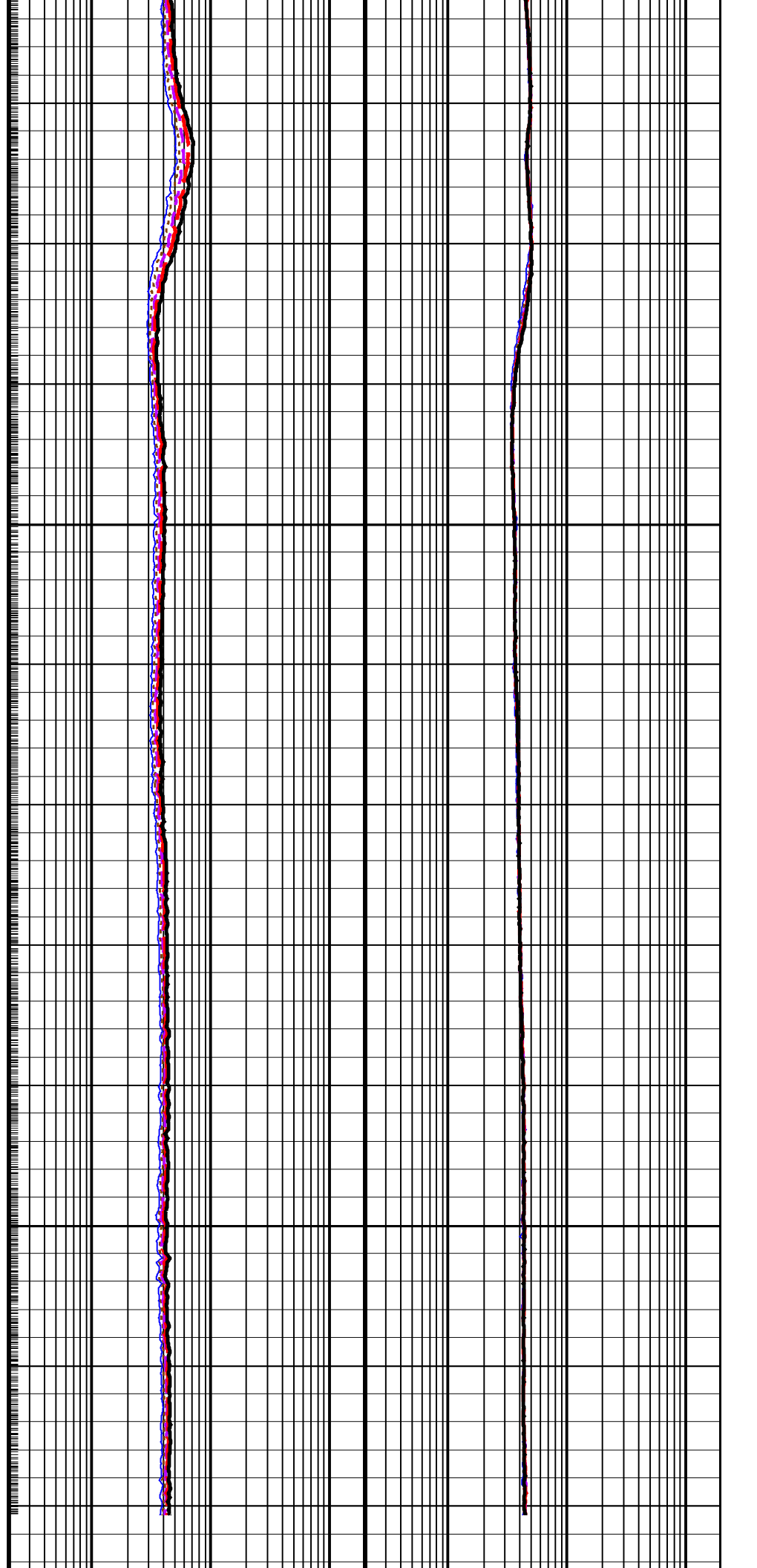
1975

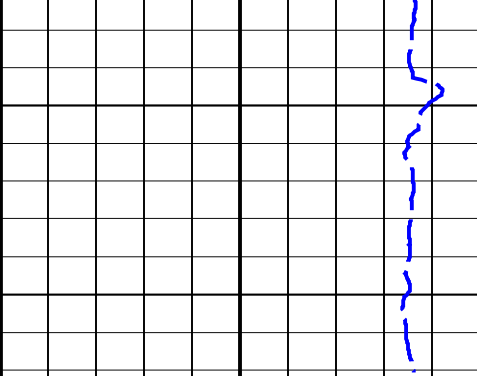




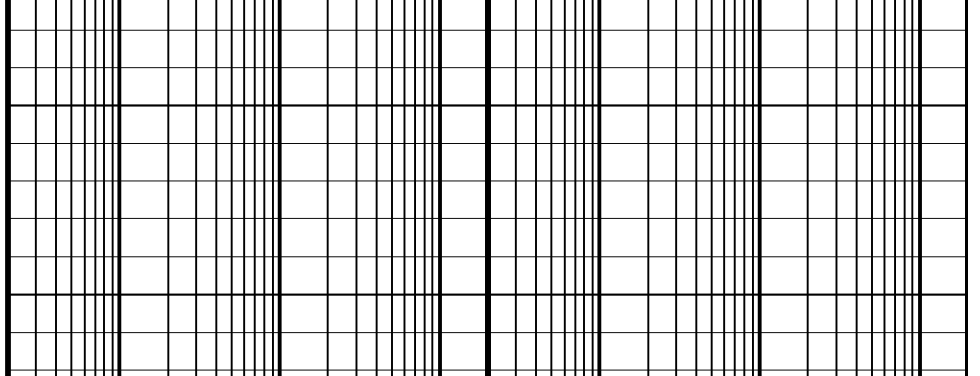
2000

2025





ARC Gamma Ray (GR_ARC)		
0	(GAPI)	200
ARC Resistivity Time After Bit (TAB_		
ARC_RES)		
0	(HR)	10
Rate of Penetration, Averaged over Last		
5ft (ROP5_RM)		
200	(M/HR)	0



ARC Phase-Shift Resistivity 16-in. at 2			ARC Attenuation Resistivity 16-in. at 2		
MHz (P16H)			MHz (A16H)		
0.2	(OHMM)	200	0.2	(OHMM)	200
ARC Phase-Shift Resistivity 22-in. at 2			ARC Attenuation Resistivity 22-in. at 2		
MHz (P22H)			MHz (A22H)		
0.2	(OHMM)	200	0.2	(OHMM)	200
ARC Phase-Shift Resistivity 28-in. at 2			ARC Attenuation Resistivity 28-in. at 2		
MHz (P28H)			MHz (A28H)		
0.2	(OHMM)	200	0.2	(OHMM)	200
ARC Phase-Shift Resistivity 34-in. at 2			ARC Attenuation Resistivity 34-in. at 2		
MHz (P34H)			MHz (A34H)		
0.2	(OHMM)	200	0.2	(OHMM)	200
ARC Phase-Shift Resistivity 40-in. at 2			ARC Attenuation Resistivity 40-in. at 2		
MHz (P40H)			MHz (A40H)		
0.2	(OHMM)	200	0.2	(OHMM)	200

PIP SUMMARY

- + ARC Gamma Ray Samples
- + ARC Resistivity Samples

IDEAL Version: ID13_0C_11

IDF

ARC8A-AA

id13_0c_02